

Global Service Way

Model : **Nothing** Model Year : **Nothing** Engine : **Nothing**

[Home](#) | [My Info](#) | [Change Language](#)

[Shop Manual](#)
[ETM](#)
[DTC Guide](#)
[Symptom](#)
[Component](#)
[SST](#)
[Owners Manual](#)
[TSB](#)

[List](#)

TSB

TSB No.	KFE10-14-E180-ED	TSB Type	Field Fix	Language	English
Distributor	C41VD(LOCAL)	Published	5/28/2010	Modified	
Model	Cee'd [ED]-(all)				
Area & Distributor	East Europe & Falcon Auto				
Gr./Sys./Comp	Топливная система / Система управления двигателем / Модуль управления двигателем				
Subject	ECM UPGRADE - ED 2.0 EGR VALVE CONTROL LOGIC				

Description

This bulletin provides information related to ECM software upgrade of some 06MY~10MY Cee'd(ED) vehicles with D2.0L engines which experience hesitation at acceleration as soon as vehicle starts.

Applicable Vehicles

- Model: 06MY~10MY, Cee'd (ED) D2.0L Vehicles with M/T
- Area: EUROPE

Parts Information

■ ECM ROM ID INFORMATION TABLE

Model	Model Year	T/M	DPF	ECM P/N	ROM ID	
				OLD	Previous	New
ED D2.0	06MY~	M/T	○	39113-27700	C0EDDM0EI02D C0EDDM0EI03D	C0EDDM0EI04T
				39113-27701	H0EDDM0EI03D	H0EDDM0EI04D
			X	39113-27710	C0EDCM0EI01D C0EDCM0EI02D	C0EDCM0EI01D C0EDCM0EI02D
				39113-27711	H0EDCM0EI03D	H0EDCM0EI03D

Operation Code And Time

Model	OP Code	OP Name	OP Time	Nature	Cause
ED D2.0	39110F99	ECM upgrade	0.2 M/H	N94	C40

N94: Inoperative, C40: Improper adjustment

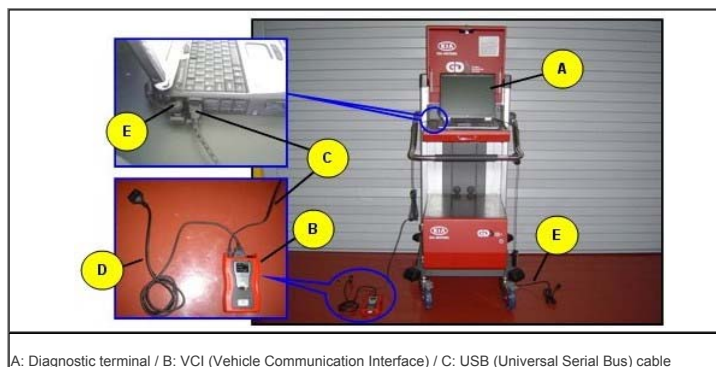
Service Procedure

■ CAUTIONS DURING CONTROL UNIT UPGRADE

- 1) Make sure the vehicle's battery has reasonable charge. If the vehicle has been in storage for days, run the engine to assure an adequate battery charge state for reliable upgrade results.
- 2) Turn off all lamps (Do not leave head lamp switch in auto mode.) and all accessories (including heater, A/C, blower, radio, seat warmer, defroster, etc.) not to allow the battery to be discharged during upgrade.
- 3) Perform upgrade with the ignition switch in the ON position.
- 4) Be careful not to disconnect any cables connected to the vehicle or scan tool during upgrade.
- 5) Do not start the engine during upgrade.
- 6) Do not turn off the ignition switch during upgrade.

1. CONTROL UNIT UPGRADE PROCEDURE USING THE GDS

1-1. GDS (Global Diagnostic System) INSTALLATION PROCEDURE



D: DLC cable (16-pin)/E: Power supply cable

1) Connect the power supply connector to the diagnostic terminal.

[NOTE]

- If attempting to perform the upgrade with the power supply cable disconnected from the diagnostic terminal, make certain that the diagnostic terminal is charged enough for the upgrade. If not, the upgrade may fail in progress. Therefore, it is strongly recommended to connect the power supply cable to the diagnostic terminal during the upgrade procedure.

2) Connect the USB cable between the VCI and the diagnostic terminal.

[NOTE]

- When performing the upgrade using the GDS, wireless communication between the VCI and the diagnostic terminal is NOT available. Therefore, be sure to connect the USB cable between the VCI and the diagnostic terminal.

3) Connect the 16-pin DLC cable from the VCI into the vehicle's DLC connector under the driver side instrument panel.

4) Turn on the VCI and diagnostic terminal with the ignition key in the ON position.

[NOTE] Do not start the engine.

1-2. AUTOMATIC UPGRADE PROCEDURE USING GDS

1) Choose **VIN** or **ECU Upgrade** on the initial screen.

2) Enter the vehicle information by entering the vehicle's VIN or selecting the vehicle model, model year, engine/fuel type and **ENGINE** as the system and then click **OK**.



3) Select **ECU Upgrade** on the initial screen after entering the vehicle information.

4) Select **Auto Mode** then **ENGINE** in the left **ECU Upgrade** column.

5) Read **Preparation** and click **OK**.

6) The GDS will read the vehicle's ROM ID.

7) After the **Current ROM ID** is displayed, select the **Upgrade Event**, "138.ED 2.0 EGR VALVE CONTROL LOGIC."

8) After clicking the **Upgrade** button, read **Information** then click **OK**.

9) The vehicle battery voltage is checked to make sure it is at least 12 volts to assure reliable upgrade results.

Click **OK** if the results indicate **Voltage is OK**.

[NOTE]

- If voltage is below 12 volts, click **Cancel** and then run the engine to assure an adequate battery charge state for reliable upgrade results.

10) Upgrade will begin and the progress of the upgrade will appear on the bar graph.

11) Upgrade will occur until 100% is reached on the bar graph. Turn the ignition key OFF for 10 seconds, place it back in the ON position and then click **OK** to continue according to **Information** displayed on the screen.

12) Click **OK** on the final screen, which indicates upgrade is complete.

13) Check if any incidental Diagnostic Trouble Codes (DTC) has been created by the upgrade and clear the DTC (s) present.

14) Start the engine to confirm proper operation of the vehicle.

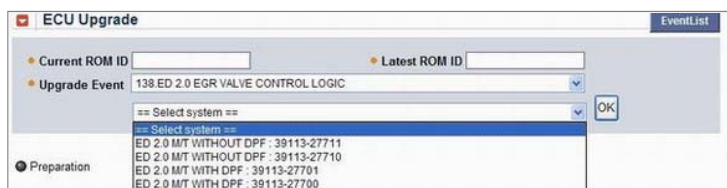
1-3. MANUAL UPGRADE PROCEDURE

[CAUTION]

- Manual upgrade should be performed only when automatic upgrade fails.

- If automatic upgrade fails, turn the ignition key OFF for about 10 seconds, place it back in the ON position to reset the control unit before performing manual upgrade.

1) Within the **ECU Upgrade** screen, select **Manual Mode** in the left column, then select **Upgrade Event #138**. Select the appropriate control unit part number with reference to the above ROM ID Information Table and click **OK**.



2) Enter the appropriate password from the below table then click **OK**.

MENU	PASSWORD
ED 2.0 M/T WITH DPF : 39113-27700	7700
ED 2.0 M/T WITH DPF : 39113-27701	7701
ED 2.0 M/T WITHOUT DPF : 39113-27710	7710

ED 2.0 M/T WITHOUT DPF : 39113-27711	7711
--------------------------------------	------

- 3) The vehicle battery voltage is checked to make sure it is at least 12 volts to assure reliable upgrade results. Click **OK** if the results indicate **Voltage is OK**.

[NOTE]

- **If voltage is below 12 volts, click Cancel and then run the engine to assure an adequate battery charge state for reliable upgrade results.**

- 4) Upgrade will begin and the progress of the upgrade will appear on the bar graph.
 5) Upgrade will occur until 100% is reached on the bar graph. Turn the ignition key OFF for 10 seconds, place it back in the ON position and then click **OK** to continue according to **Information** displayed on the screen.
 6) Click **OK** on the final screen, which indicates upgrade is complete.
 7) Check if any incidental Diagnostic Trouble Codes (DTC) has been created by the upgrade and clear the DTC (s) present.
 8) Start the engine to confirm proper operation of the vehicle.

2. CONTROL UNIT UPGRADE PROCEDURE USING THE G-SCAN

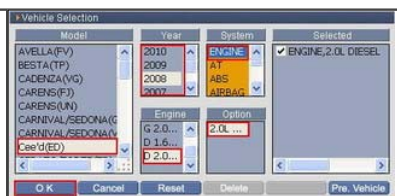
2-1. G-SCAN INSTALLATION PROCEDURE

- 1) Connect the 16-pin Data Link Connector (DLC) cable to the G-Scan and securely tighten the three bolts.
 2) Insert the updated SD memory card into the G-Scan bottom slot.
 3) Connect the 16-pin DLC cable from the G-Scan into the OBD-II connector, located under the driver's side of the instrument panel.

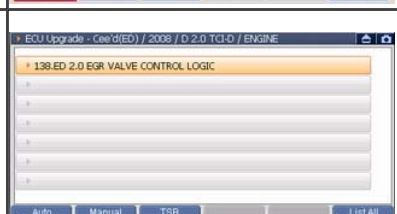


2-2. AUTOMATIC UPGRADE PROCEDURE

- 1) Select **ECM Upgrade**. Select the vehicle model, model year, **ENGINE** as the system and engine displacement, and then touch **OK**.



- 2) Select the upgrade event, "**138.ED 2.0 EGR VALVE CONTROL LOGIC**" and touch **AUTO**.



- 3) Perform the ECM upgrade in accordance with the instructions given on the G-Scan screen.
 4) Turn the ignition key OFF for 10 seconds and place it back in the ON position, then touch OK to continue.
 5) Check if any incidental Diagnostic Trouble Codes (DTC) has been created by the upgrade and clear the DTC (s) present.
 6) Start the engine to confirm proper operation of the vehicle.

2-3. MANUAL UPGRADE PROCEDURE

[NOTE]

- **The manual upgrade should be performed only when the automatic upgrade fails.**
 - **If automatic upgrade fails, turn the ignition key OFF for about 10 seconds, place it back in the ON position to reset the control unit before performing manual upgrade.**

- 1) Select ECU Upgrade. Select the vehicle model, model year, **ENGINE** as the system and engine displacement, and then touch **OK**.
 2) Select the upgrade event, "**138.ED 2.0 EGR VALVE CONTROL LOGIC**" and touch **MANUAL**.

- 3) Select the appropriate control unit part number with reference to the ROM ID Information Table.



- 4) Enter the appropriate password from the below then touch **OK**.

MENU	PASSWORD
ED 2.0 M/T WITH DPF : 39113-27700	7700
ED 2.0 M/T WITH DPF : 39113-27701	7701
ED 2.0 M/T WITHOUT DPF : 39113-27710	7710
ED 2.0 M/T WITHOUT DPF : 39113-27711	7711

- 5) Perform the ECM upgrade in accordance with the instructions given on the G-Scan screen.

- 6) Turn the ignition key OFF for 10 seconds and place it back in the ON position, then touch OK to continue.
- 7) Check if any incidental Diagnostic Trouble Codes (DTC) has been created by the upgrade and clear the DTC (s) present.
- 8) Start the engine to confirm proper operation of the vehicle.

ECU Update

138.ED 2.0 EGR VALVE CONTROL LOGIC

[Reply](#)

Next

[J-2.9L PU INTERCOOLER CHANGE](#)